



US00D777804S

(12) **United States Design Patent** (10) **Patent No.:** **US D777,804 S**  
**Doyle** (45) **Date of Patent:** **\*\* Jan. 31, 2017**

(54) **TRACK FOR A LOADER** 7,222,924 B2 \* 5/2007 Christianson ..... B62D 55/10  
305/125  
(71) Applicant: **McLaren Group Holdings Pte. Ltd.,** 7,232,130 B2 \* 6/2007 Reeves ..... B62B 19/02  
Singapore (SG) 180/184  
7,252,347 B2 \* 8/2007 Gingras ..... B62D 55/12  
305/124  
(72) Inventor: **Richardson J. Doyle,** Hawaiian D556,791 S \* 12/2007 Brazier ..... D15/28  
Gardens, CA (US) D563,438 S \* 3/2008 Bares ..... D15/24  
D587,727 S \* 3/2009 Vos ..... D15/24  
(73) Assignee: **McLaren Group Holdings Pte. Ltd.,** D603,880 S \* 11/2009 Brazier ..... D15/28  
Singapore (SG)  
(Continued)

(\*\*) Term: **15 Years**

(21) Appl. No.: **29/564,179**

(22) Filed: **May 11, 2016**

(51) **LOC (10) Cl.** ..... **15-03**

(52) **U.S. Cl.**  
USPC ..... **D15/28**

(58) **Field of Classification Search**  
USPC ..... D15/10, 22-26, 28; 305/142, 125, 132,  
305/135, 195, 129, 136; 180/9.54, 9.21  
CPC ..... B62D 55/04; B62D 55/084; B62D 55/14;  
B62D 55/02; B62D 55/125; B62D 55/08;  
B62D 55/00

See application file for complete search history.

(56) **References Cited**

**U.S. PATENT DOCUMENTS**

5,452,949 A \* 9/1995 Kelderman ..... B62D 49/0635  
180/9.44  
5,842,757 A \* 12/1998 Kelderman ..... B62D 55/02  
305/125  
D425,526 S \* 5/2000 Juncker ..... D15/28  
D473,245 S \* 4/2003 Heitmann ..... D15/28  
D488,171 S \* 4/2004 Juncker ..... D15/28  
D505,136 S \* 5/2005 Brazier ..... D15/28  
D510,742 S \* 10/2005 Stover ..... D15/28  
D528,133 S \* 9/2006 Brazier ..... D15/28

Primary Examiner — Mark Goodwin

(74) *Attorney, Agent, or Firm* — K. David Crockett, Esq.;  
Paul J. Backofen, Esq.; Crockett & Crockett, PC

(57) **CLAIM**

The ornamental design for a track for a loader, as shown and described.

**DESCRIPTION**

FIG. 1 is right-front perspective view of the loader track showing our new design that repeats uniformly along the circumference of the track.

FIG. 2 is right side view of the track for a loader of FIG. 1; the opposite side being a mirror image thereof.

FIG. 3 is a top view of the track for a loader of FIG. 1.

FIG. 4 a front view of the track for a loader of FIG. 1.

FIG. 5 a bottom view of the track for a loader of FIG. 1.

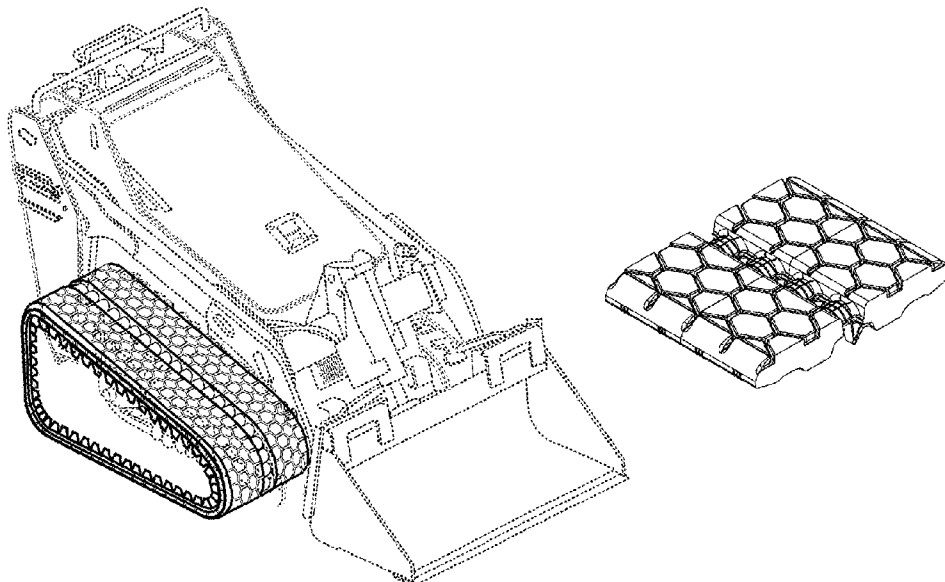
FIG. 6 is an enlarged close-up top view of a portion of the track for a loader of FIG. 3.

FIG. 7 is an enlarged close-up perspective view of a portion of the track for a loader of FIG. 1.

FIG. 8 is an enlarged cross section view of the track for a loader of FIG. 1; and,

FIG. 9 is an enlarged close-up side view of a portion of the track for a loader of FIG. 2.

**1 Claim, 6 Drawing Sheets**



(56)

**References Cited**

U.S. PATENT DOCUMENTS

8,347,991	B2 *	1/2013	Zuchoski .....	B62D 55/10 180/9.1
8,632,138	B2 *	1/2014	Besette .....	B62D 55/04 305/142
D709,921	S *	7/2014	Brazier .....	D15/28
D711,928	S *	8/2014	Brazier .....	D15/28
D712,937	S *	9/2014	Wennerborn .....	D15/28
8,911,031	B2 *	12/2014	Besette .....	B62D 55/084 305/128
D723,070	S *	2/2015	Sugihara .....	D15/28
D723,590	S *	3/2015	Tateishi .....	D15/28
D724,107	S *	3/2015	Tateishi .....	D15/28
D724,628	S *	3/2015	Tateishi .....	D15/28
D725,682	S *	3/2015	Tateishi .....	D15/28
D738,405	S *	9/2015	Meyer .....	D15/28

\* cited by examiner

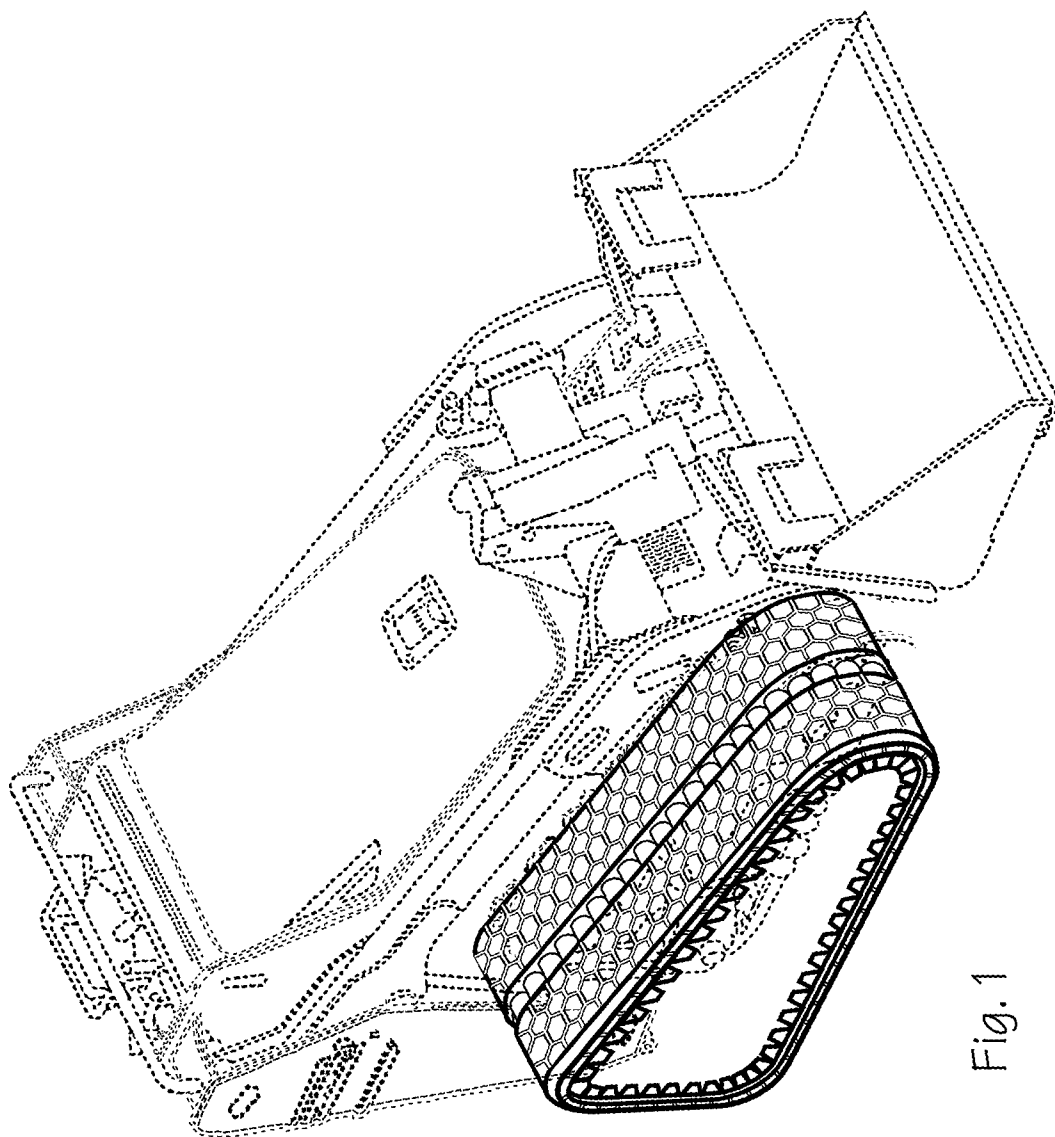


Fig. 1

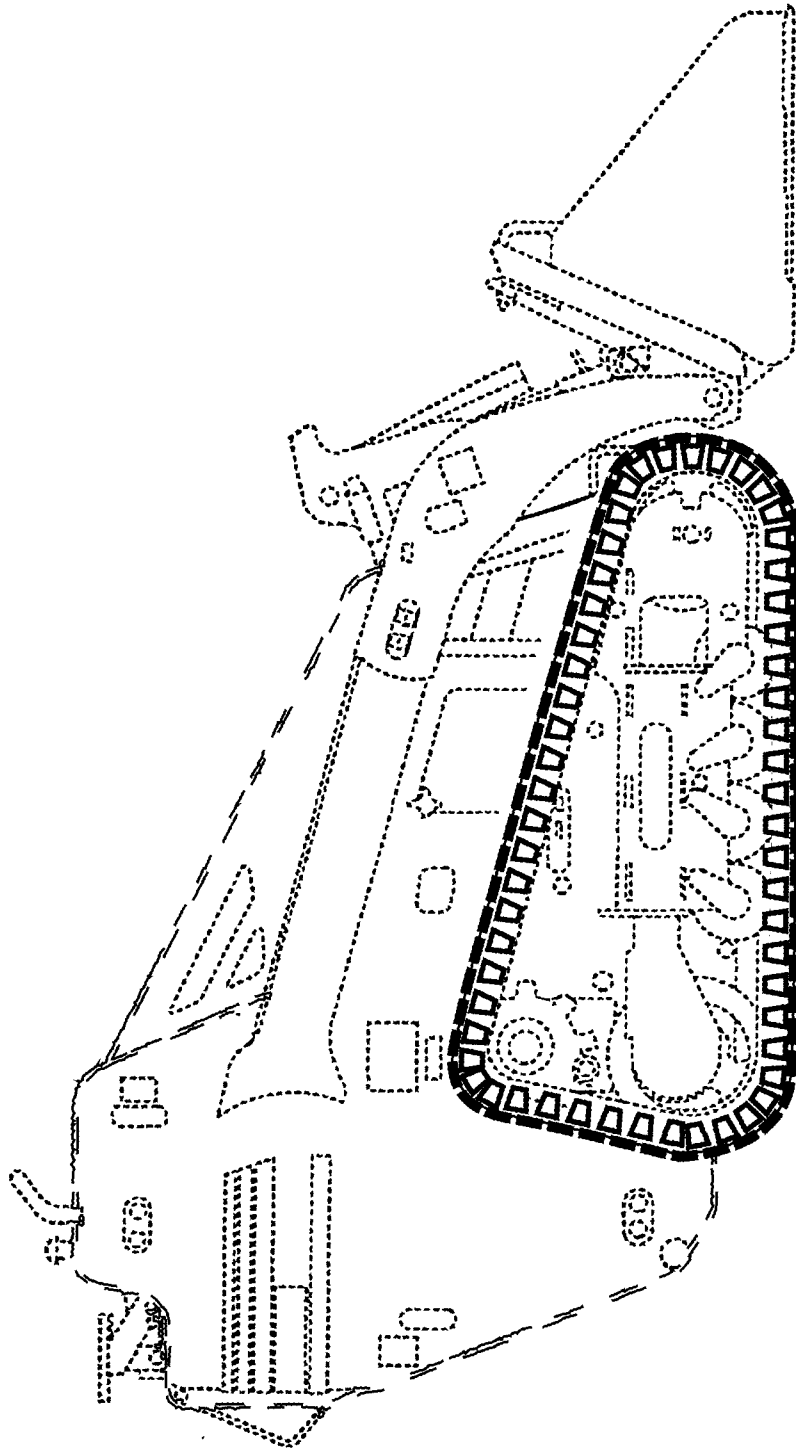


Fig. 2

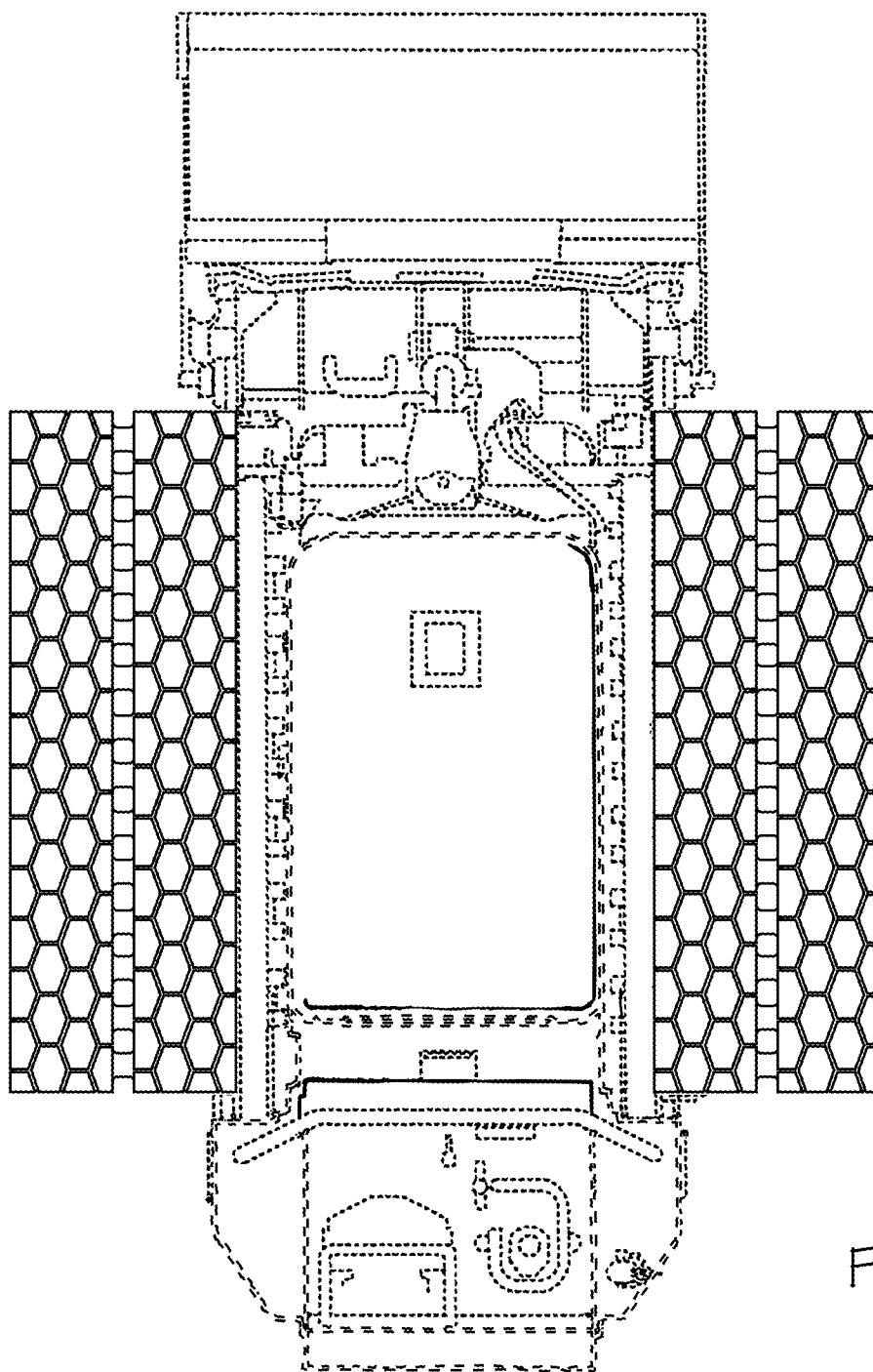


Fig. 3

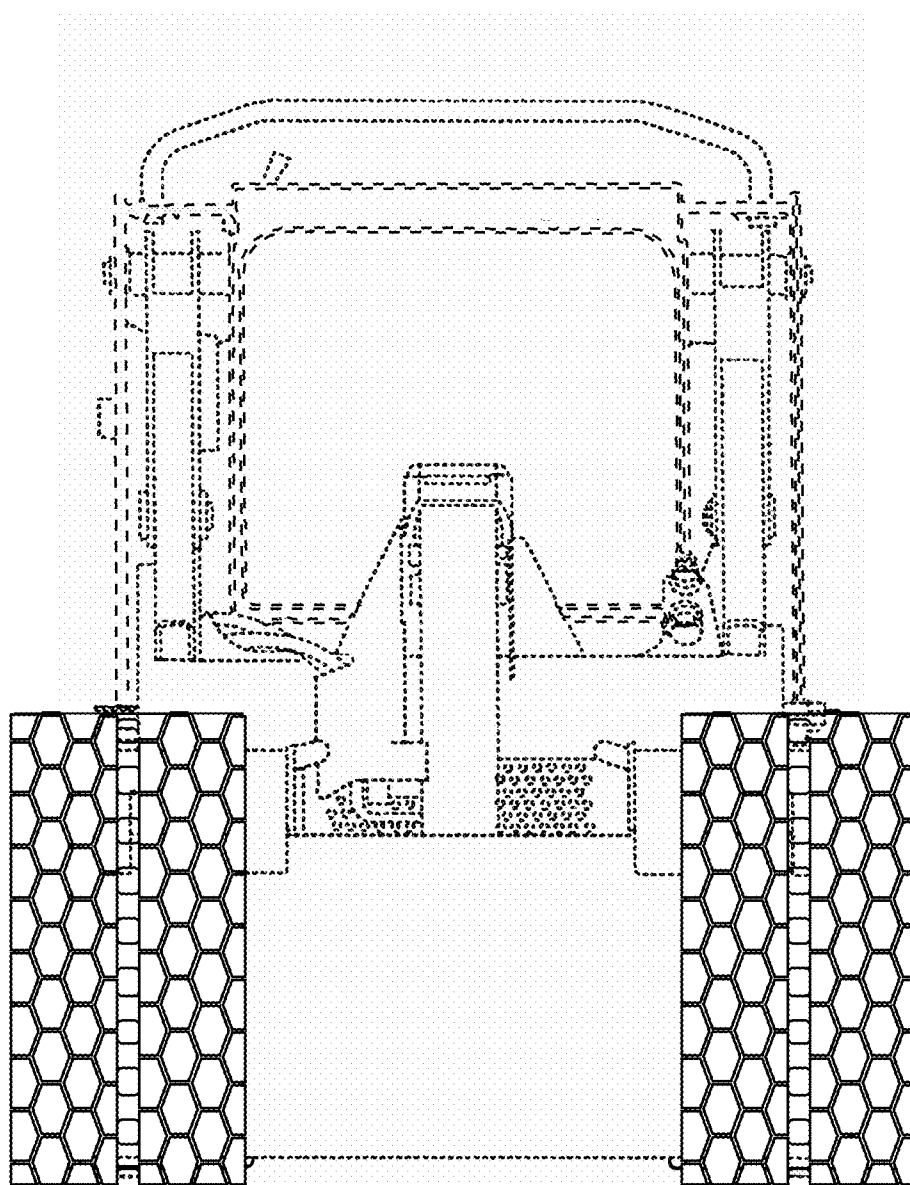


Fig. 4

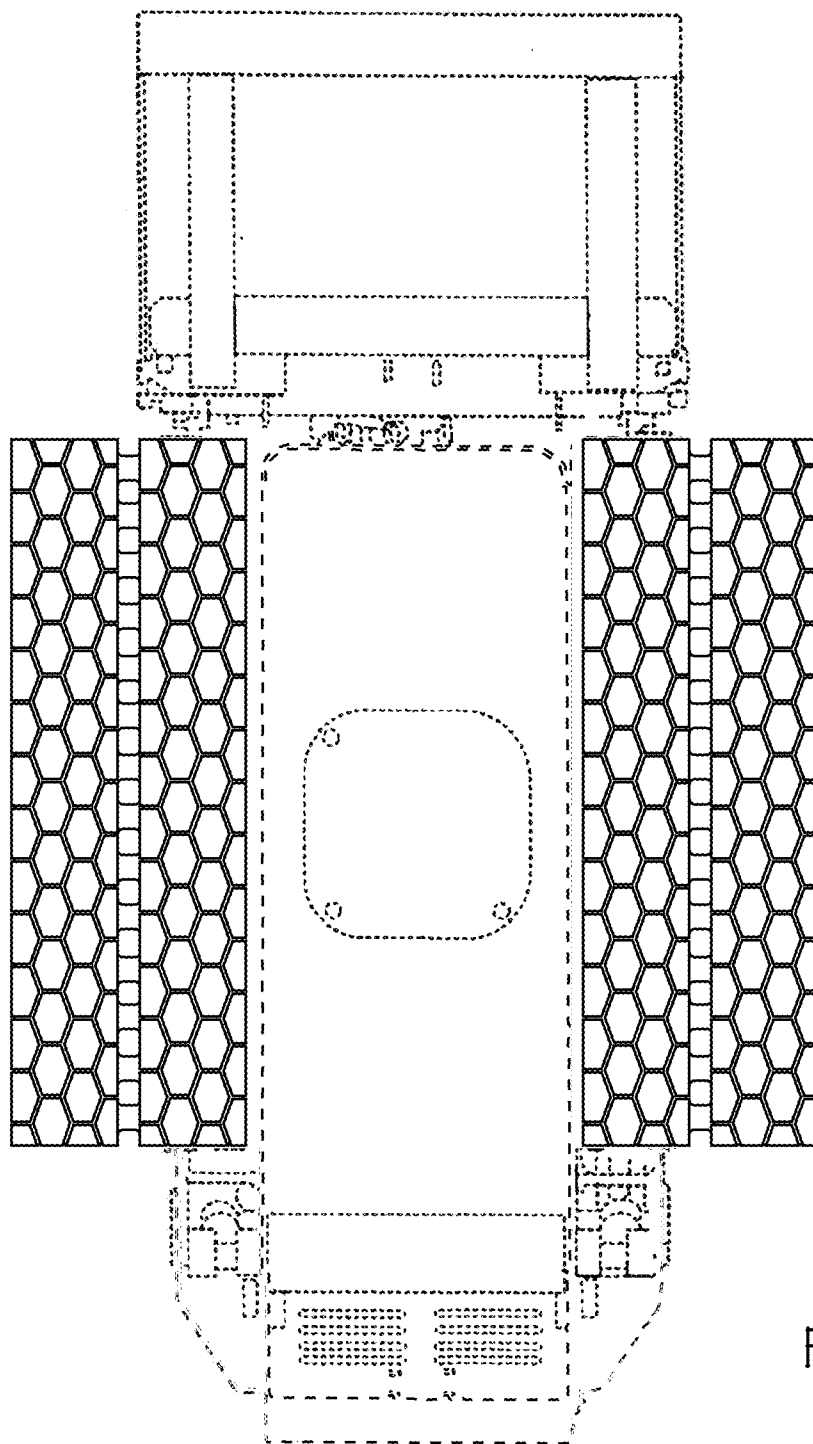


Fig. 5

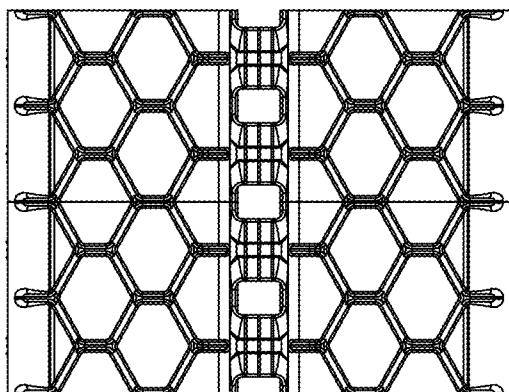


Fig. 6

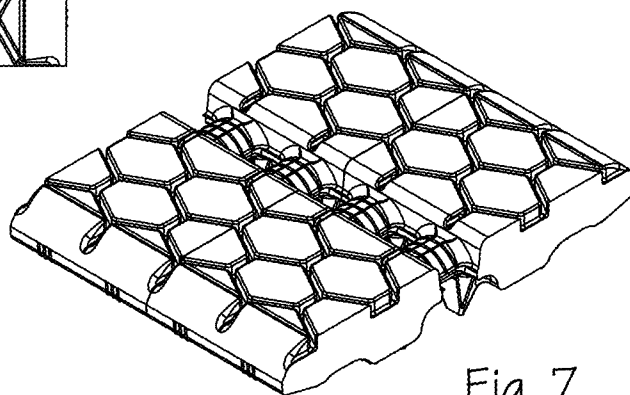


Fig. 7

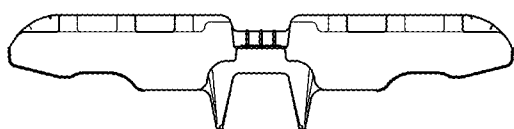


Fig. 8

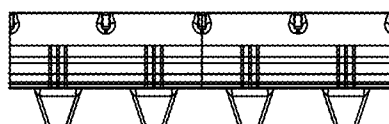


Fig. 9